



## SCHEDA DI APPROFONDIMENTO N° 28

### RECENT DEVELOPMENTS IN AUSTRALIAN IMMIGRATION AND MIGRATION POLICY

By Graeme Hugo

Federation Fellow, Professor of Geography and  
Director of the National Centre for Social Applications of GIS,  
The University of Adelaide

---

*A cura di Sisifo Italia - Ufficio Stampa MIM*

Responsabile: Giuseppe Lanzi, 335.66.98.734 [giuseppelanzi@scalabrini.net](mailto:giuseppelanzi@scalabrini.net)  
Email: [development@scalabrini.net](mailto:development@scalabrini.net) WEB [www.meetingloreto.it](http://www.meetingloreto.it) [www.sisifoitalia.it](http://www.sisifoitalia.it)  
infoline: 071.7500256 – Fax 071.7501972

# **RECENT DEVELOPMENTS IN AUSTRALIAN IMMIGRATION AND MIGRATION POLICY**

by

**Graeme Hugo**

**Federation Fellow, Professor of Geography and  
Director of the National Centre for Social Applications of GIS,  
The University of Adelaide**

**Presentation to 10<sup>th</sup> International Migration Meeting, Loreto, Italy**

**28 September – 3 October 2007**

# Outline of Presentation

- **Introduction**
- **The Demographic and Economic Context**
- **Recent Trends in Settler Migration in Australia**
- **Trans Tasman Migration**
- **Increasing Non-Permanent Migration**
- **Increased 'Onshore' Migration**
- **State Specific and Regional Migration Schemes (SSRM)**
- **Changes in Composition of Migration**
- **Emigration**
- **Migration and Development**
- **Contemporary Issues in Australian Immigration**
- **Conclusion**

# Australia: A Country of Immigration

- 23 percent born overseas
- One fifth Australia-born with an overseas-born parent(s)
- 630,513 persons temporarily present at 30/6/06
- 289,300 with the right to work
- 527,609 given temporary residence in 2005-06
- 140,148 incoming permanent settlers in 2006-07
- 1 million expatriates outside Australia

# **A Shift in Australia's Migration Paradigm**


- **Move Away from Total Focus on Permanent Migration**
- **Increased Temporary Migration**
- **Increased Focus on Skill in Migration Program**
- **Increased 'On Shore' Migration**
- **Increased Emigration**
- **State Specific and Regional Migration**

# The Australian Context

- **Population 21 million**
- **Annual growth rate 1.5 percent p.a.**
- **54 percent due to migration**
- **TFR 1.84**
- **Unemployment levels lowest for 30 years**
- **Skill shortage**
- **Ratio 65+ : 15-64**

<b>2003</b>	<b>19.1</b>
<b>2071</b>	<b>37.1</b>

# Australia's Migration Program

- **Permanent Settlers** 
  - Humanitarian**
  - Non-Humanitarian**
- **Temporary Migration**
- **New Zealand Migration**

## Outcomes of Australia's Humanitarian Program by Component and Category from 1997-98 to 2005-06

Source: Rizvi 2002, p. 29; 2003, p. 47; 2004, p. 42 and 2005, p. 37; Mills 2006, p. 41

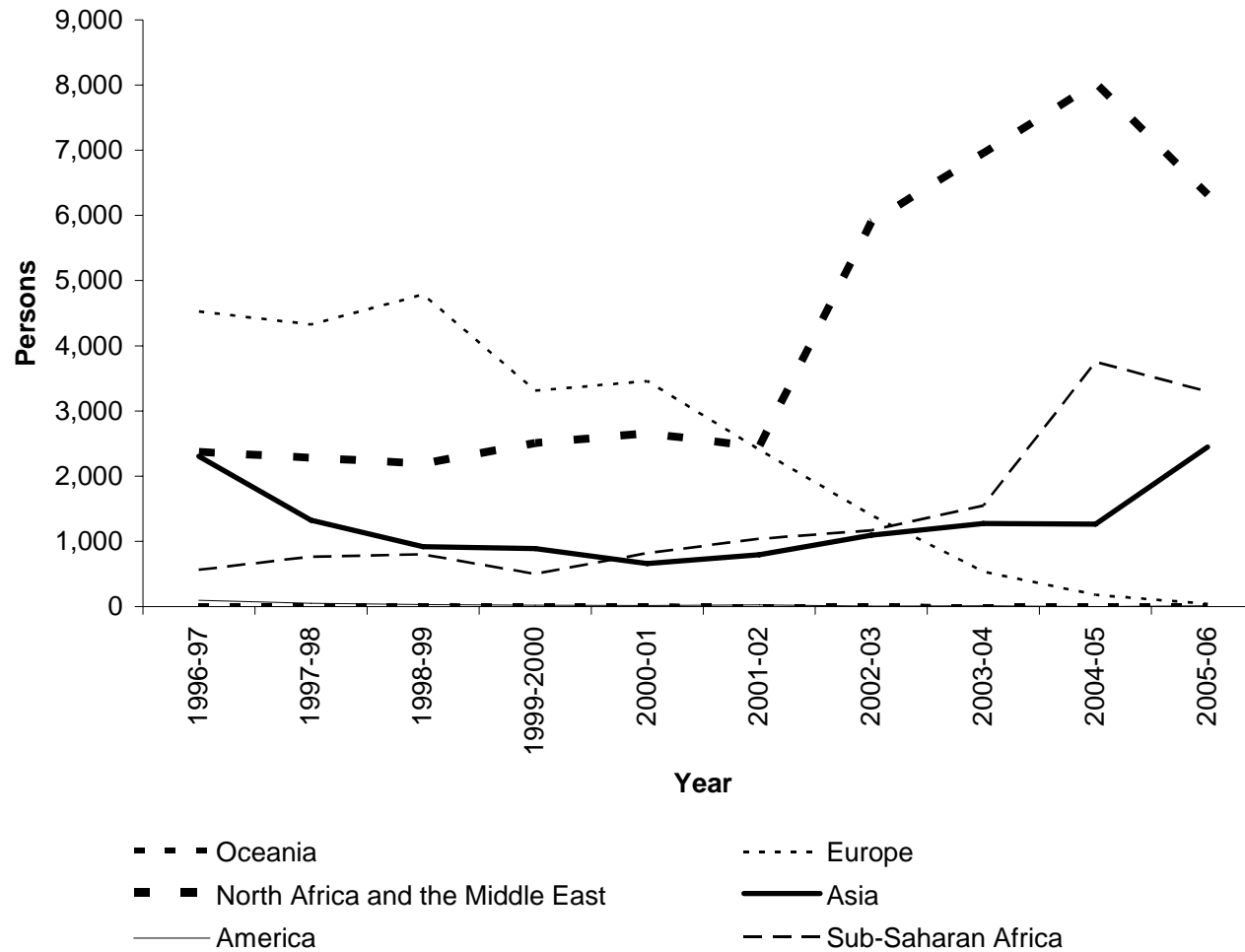
Component	Category	97-98	98-99	99-00	00-01	01-02	02-03	03-04	04-05	05-06
Offshore	Refugee	4,010	3,988	3,802	3,997	4,160	4,376	4,134	5,511	6,022
	SHP	4,636	4,348	3,051	3,116	4,258	7,280	7,668	6,585	6,736
	SAC	1,821	1,190	649	879	40	-	-	} 1,082	1,386
Onshore Temporary Humanitarian	1,588	1,834	2,458	5,741	3,891	866	2,047**			
					164	6	3	2		
Total		12,055	11,360	9,960*	13,773	12,349	12,525	13,851	13,178	14,144

\* In this year there were 5,000 temporary safe haven visas to Kosovars offshore (4,000) and Timorese (1,900).

\*\* Includes 1,228 Onshore SHP visas granted to East Timorese under ministerial intervention powers.

# Australia: Region of Birth of Humanitarian Settler Arrivals, 1996-97 to 2005-06

Source: DIMA, *Immigration Update*, various issues



# Program Management Structure (2006-07)

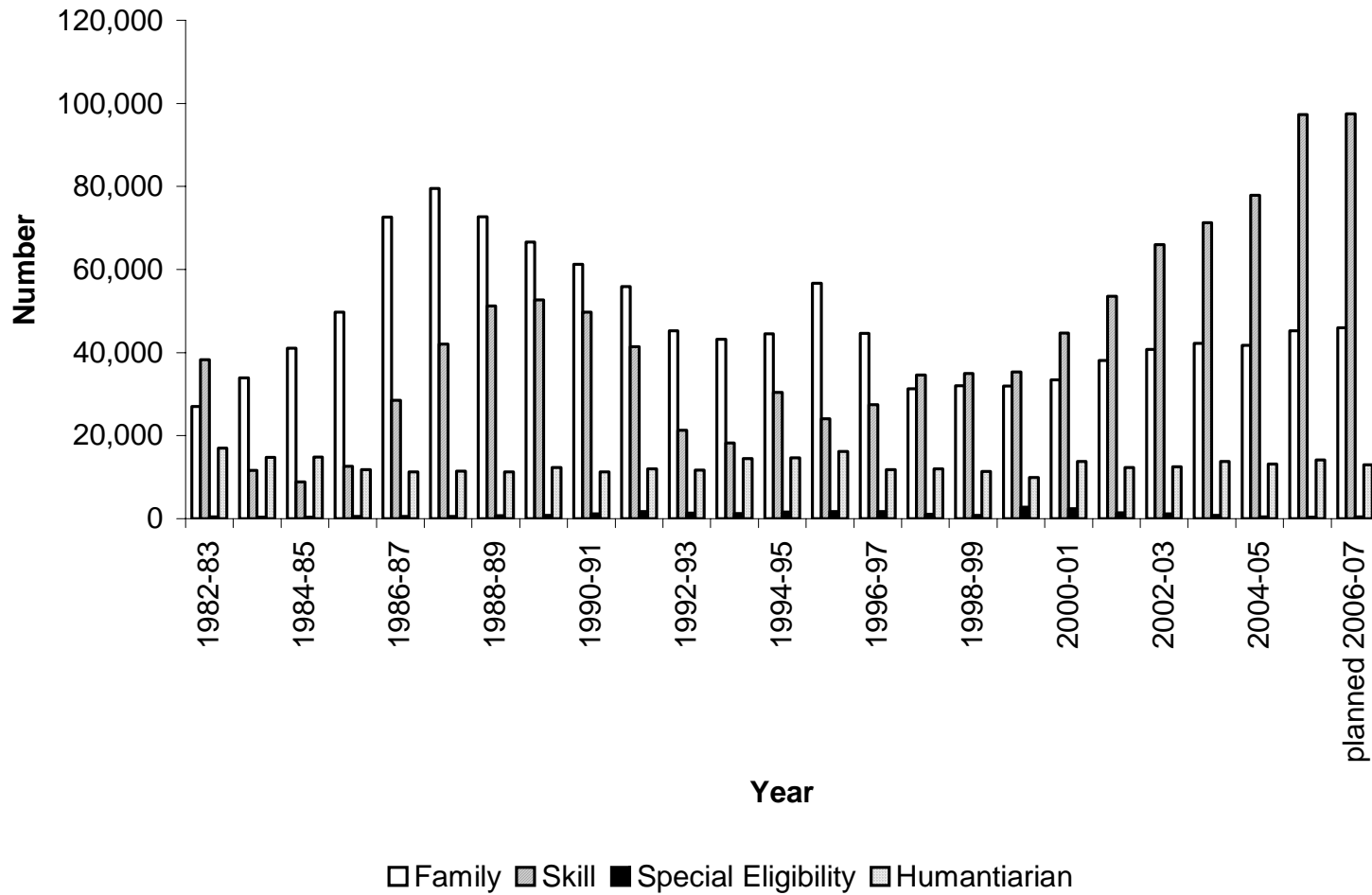
## Migration Program

Source: DIMA 2007, p. 19

<u>Skill</u>	<u>Family</u>	<u>Special Eligibility</u>
Business Skills, ENS & Distinguished Talent Demand driven	Spouses & Dependent Children Demand driven	Can be capped
State-Specific and Regional Migration Demand Driven	Exempt from capping Fiancés & Interdependents	
Skilled Independent & Skilled Australian Sponsored Generally points tested	Can be capped subject to demand for spouse and dependent child places Parents & Preferential/Other Family	
Planning level adjusted subject to demand in Business Skills, ENS and State-Specific and Regional Migration categories	Can be capped subject to demand in all other Family categories	

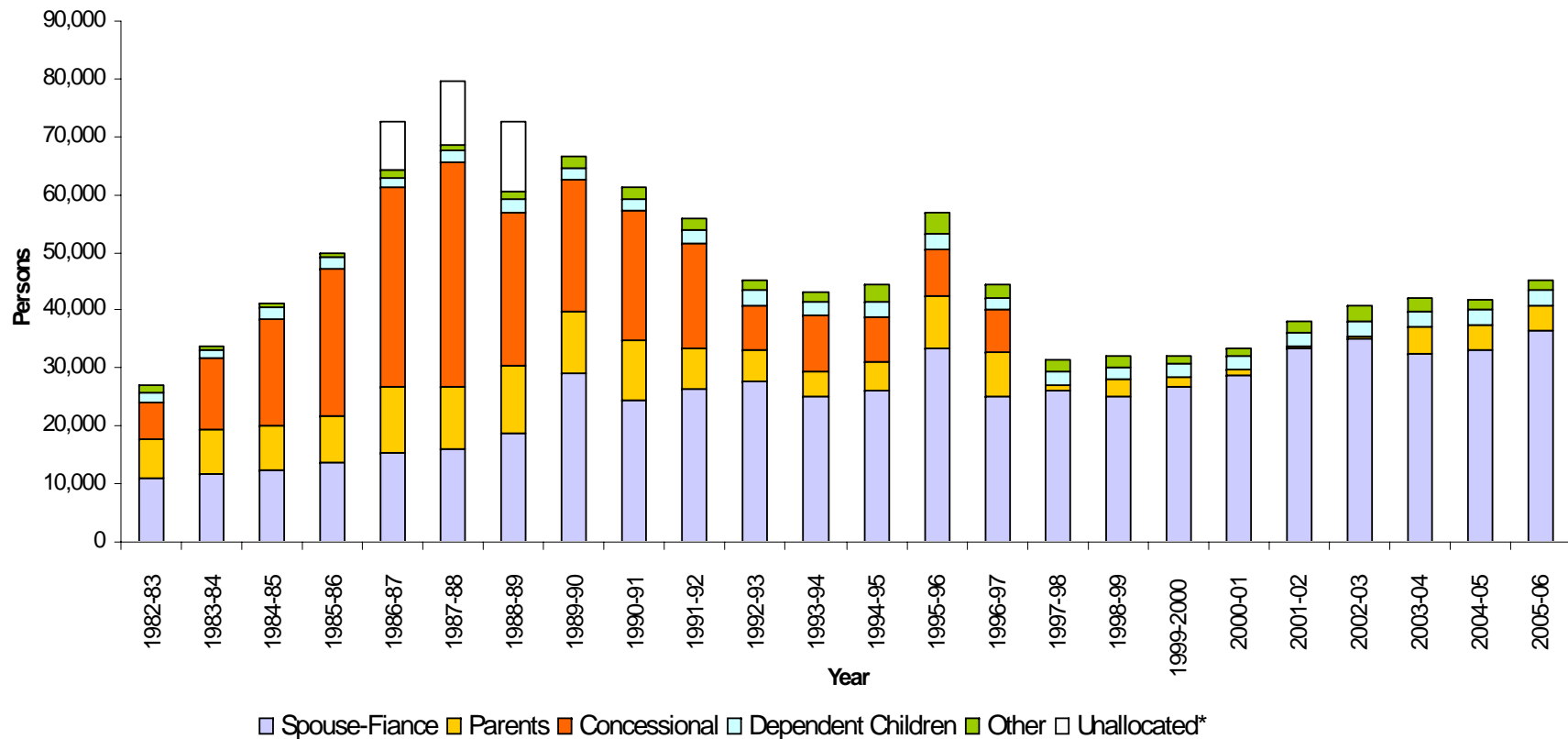
# Australia: Migration Program Outcomes by Stream, 1989-90 to 2006-07

Source: DIMA *Population Flows: Immigration Aspects*, various issues



# Australia: Family Stream Outcomes by Visa, 1982-83 to 2005-06

Source: DIMA, *Australian Immigration Consolidated Statistics and Population Flows: Immigration Aspects*, various issues

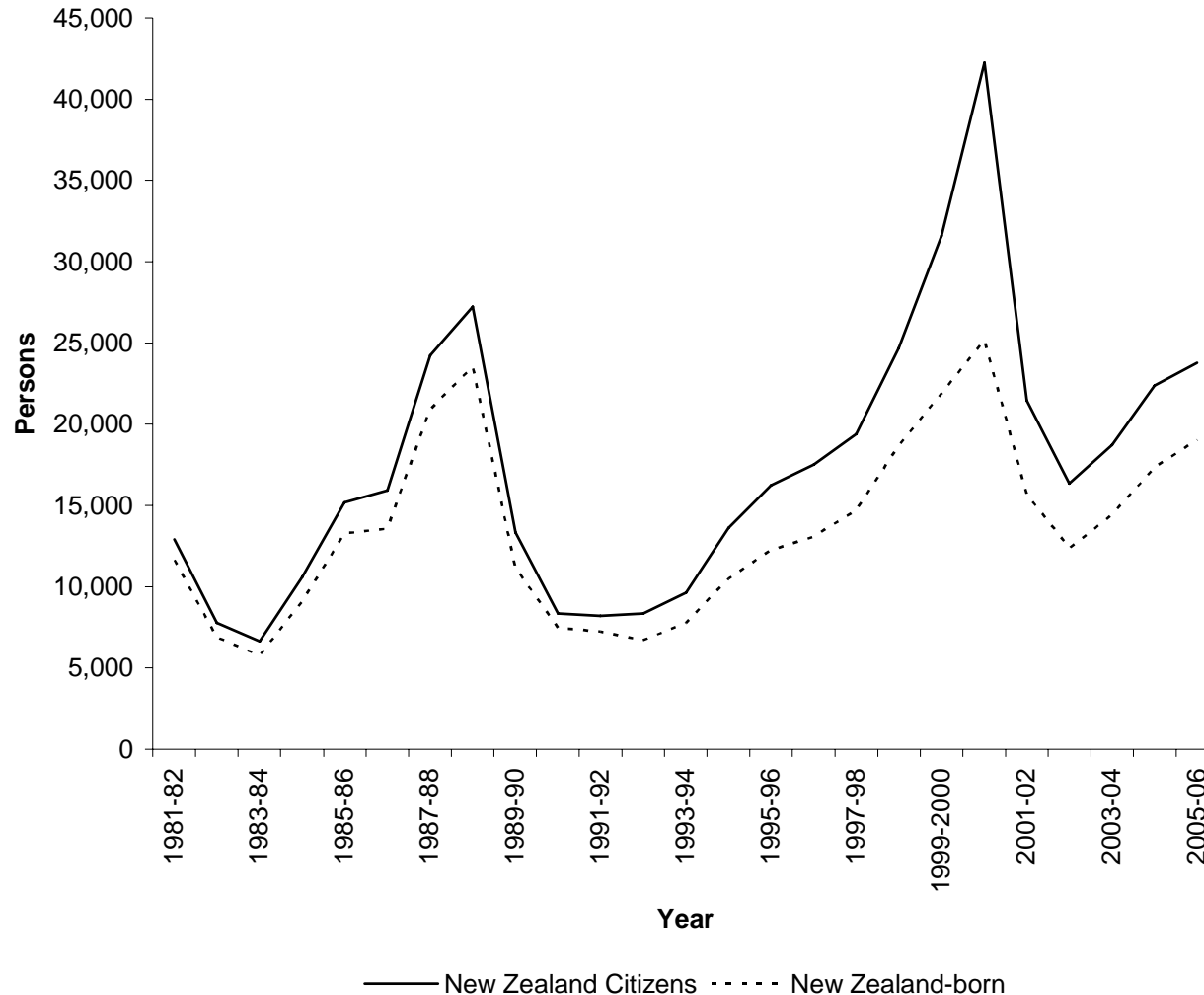


\*Estimated GORS/PEPAE approvals. These figures are not attributed to sub-components until 1989/90

Note: Data prior to 1986-87 for off-shore only

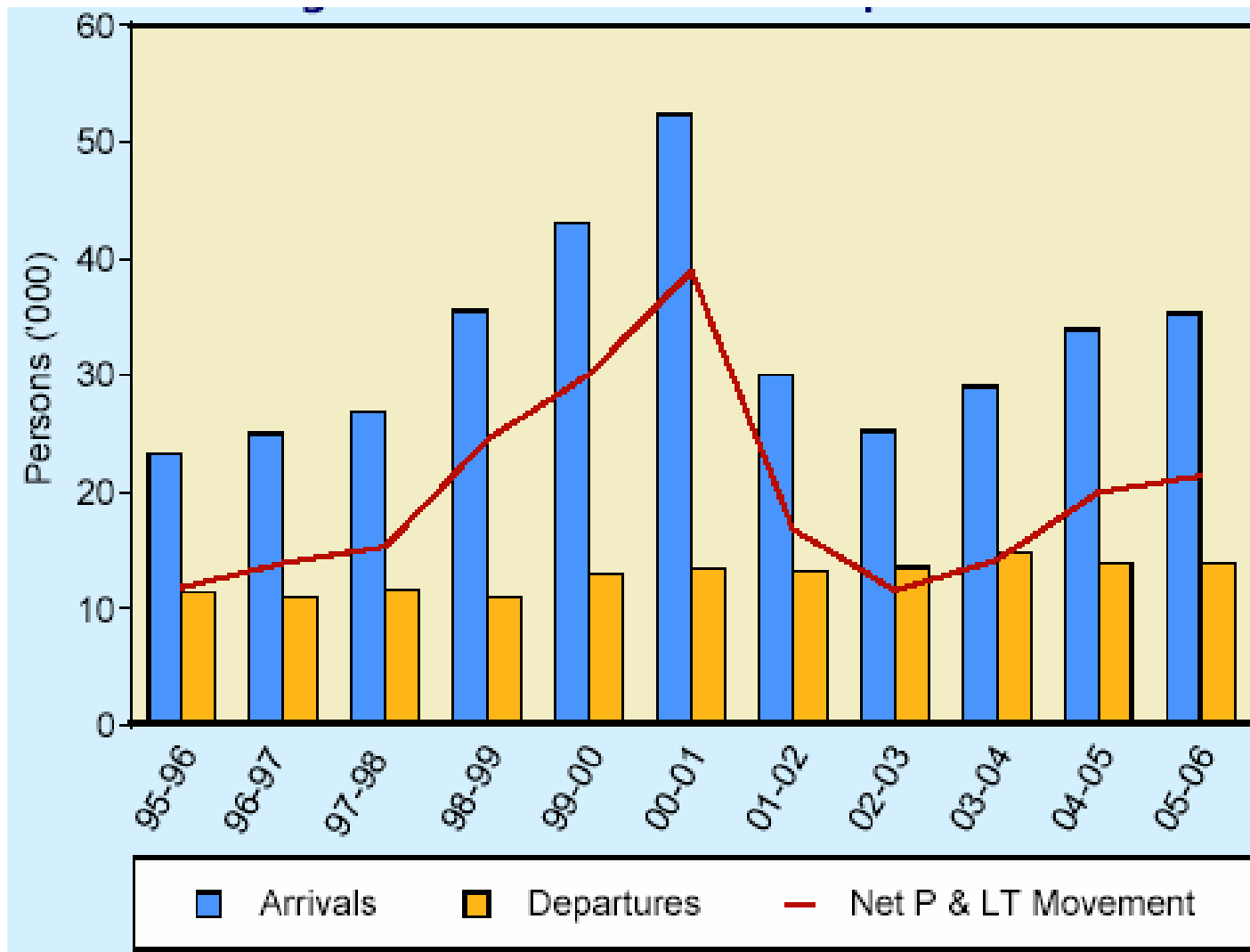
# Australia: Arrivals of New Zealand Citizens and New Zealand-Born Persons, 1981-82 to 2005-06

Source: DIMA, *Australian Immigration: Consolidated Statistics and Immigration Update*, various issues



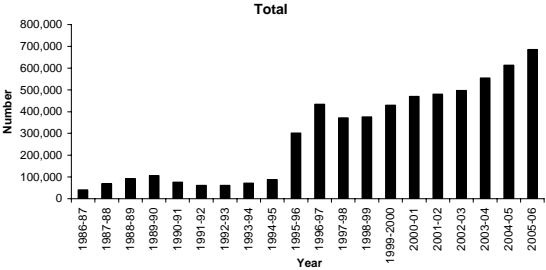
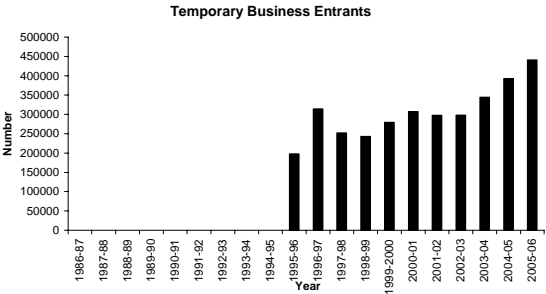
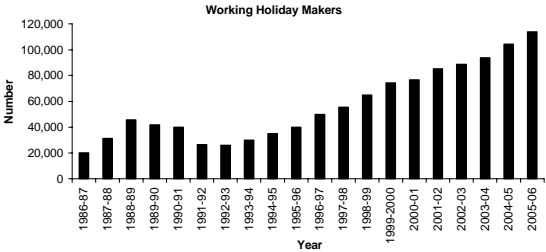
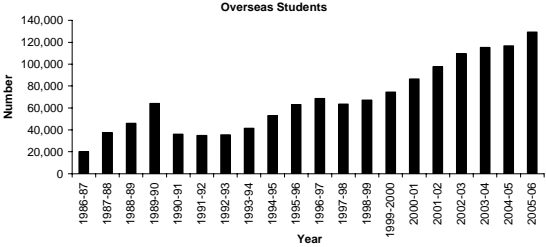
## Australia: New Zealand Citizen Permanent and Long Term Arrivals and Departures, 1995-96 to 2005-06

Source: DIMA 2007, p. 52



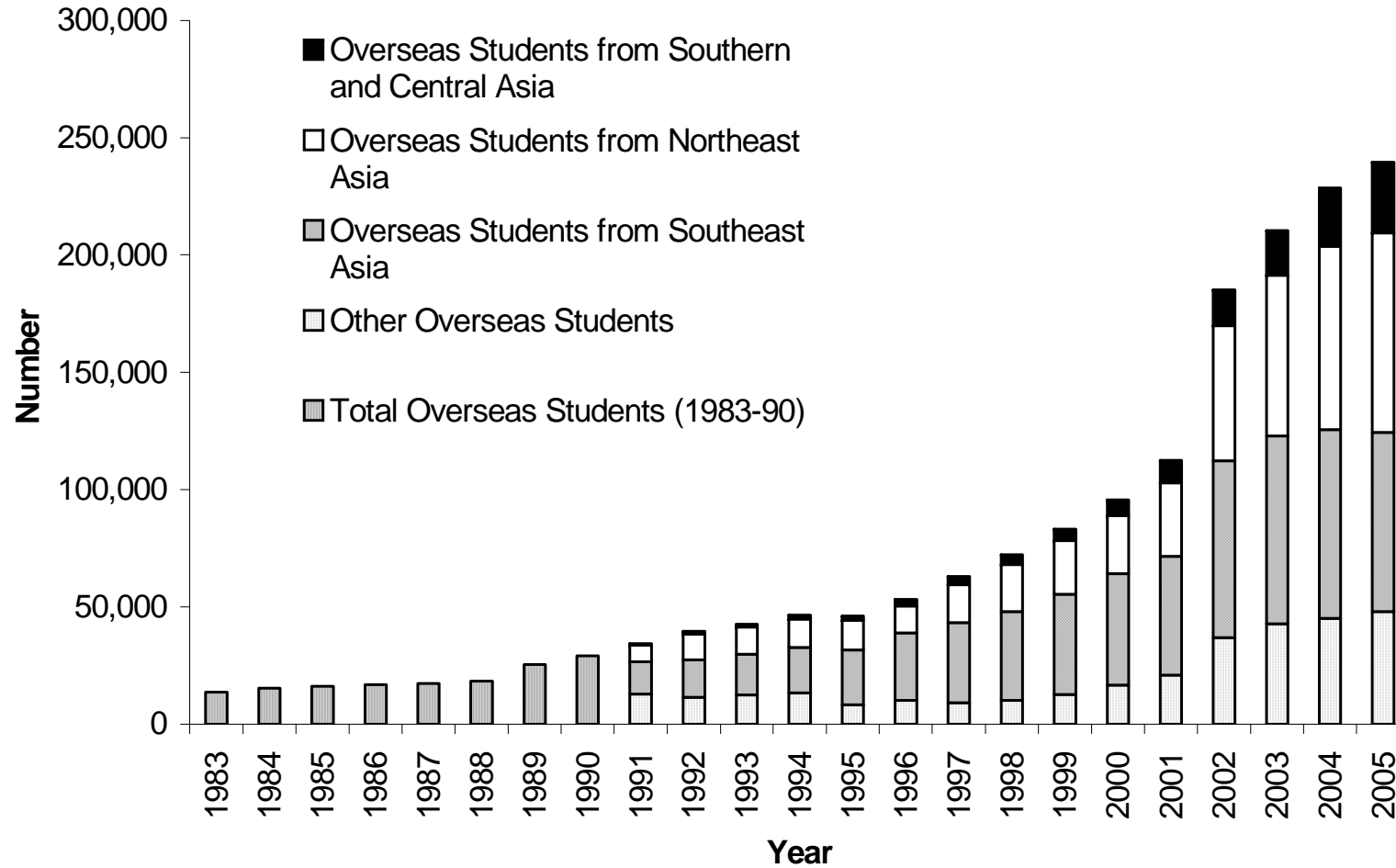
# Temporary Migration to Australia by Category, 1986 to 2006

Source: DIMA *Population Flows: Immigration Aspects*, various issues



# Overseas Students in Australian Universities, 1983-2005

Source: DEST, *Students: Selected Higher Education Statistics*, various issues



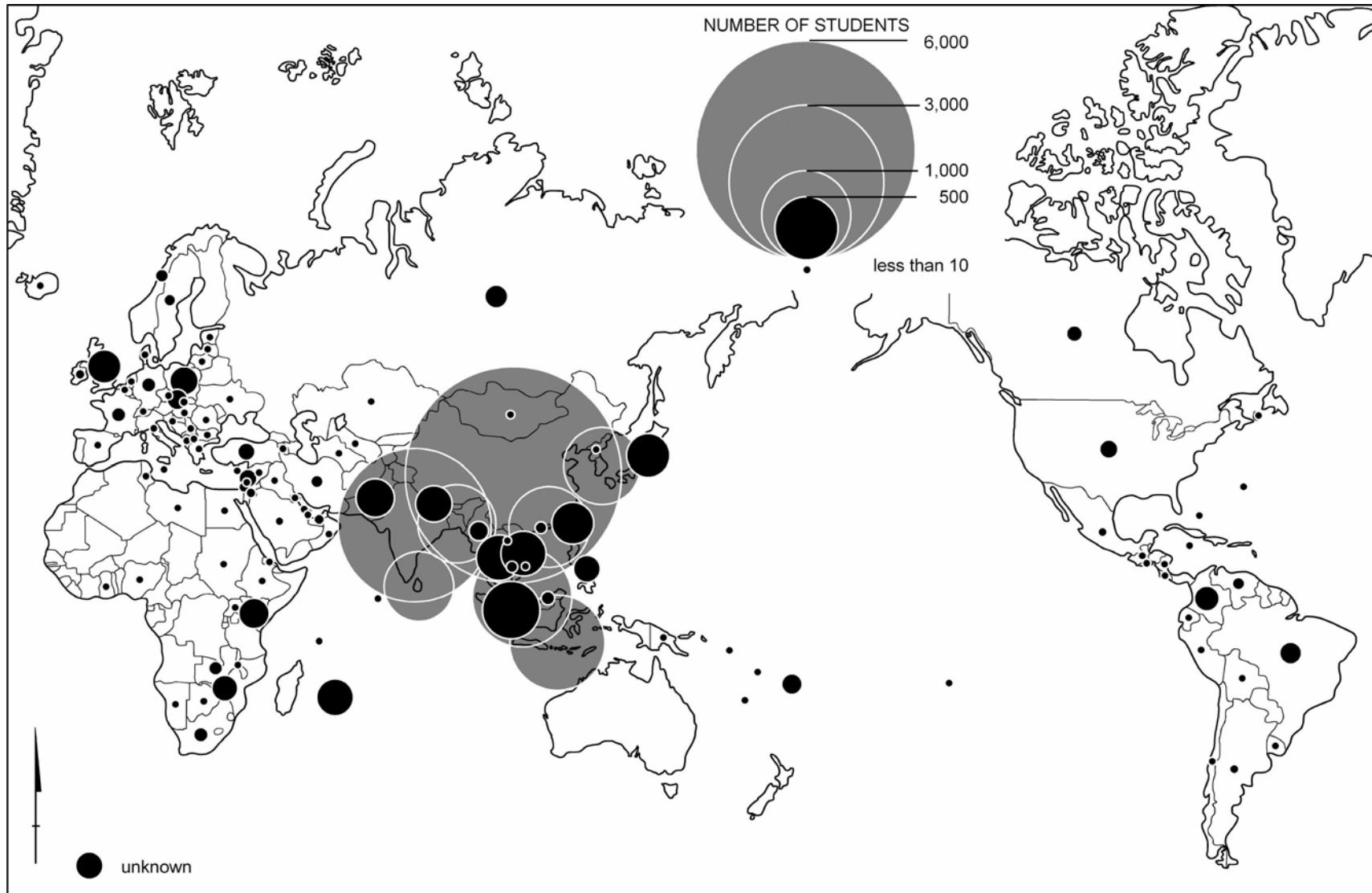
## Australia: Visa Category of Permanent Additions, 2000-01 to 2005-06

Source: DIMA *Immigration Update*, various issues

Visa Category	Onshore		Offshore		Total	
	No.	%	No.	%	No.	%
Skill	125,637	57.5	274,423	41.8	400,060	45.7
Family	73,793	33.8	169,056	25.7	242,849	27.7
Refugee-Humanitarian	13,358	6.1	59,624	9.1	72,982	8.3
Other	5,740	2.6	153,684	23.4	159,424	18.2
Total	218,528	100.0	656,787	100.0	875,315	100.0

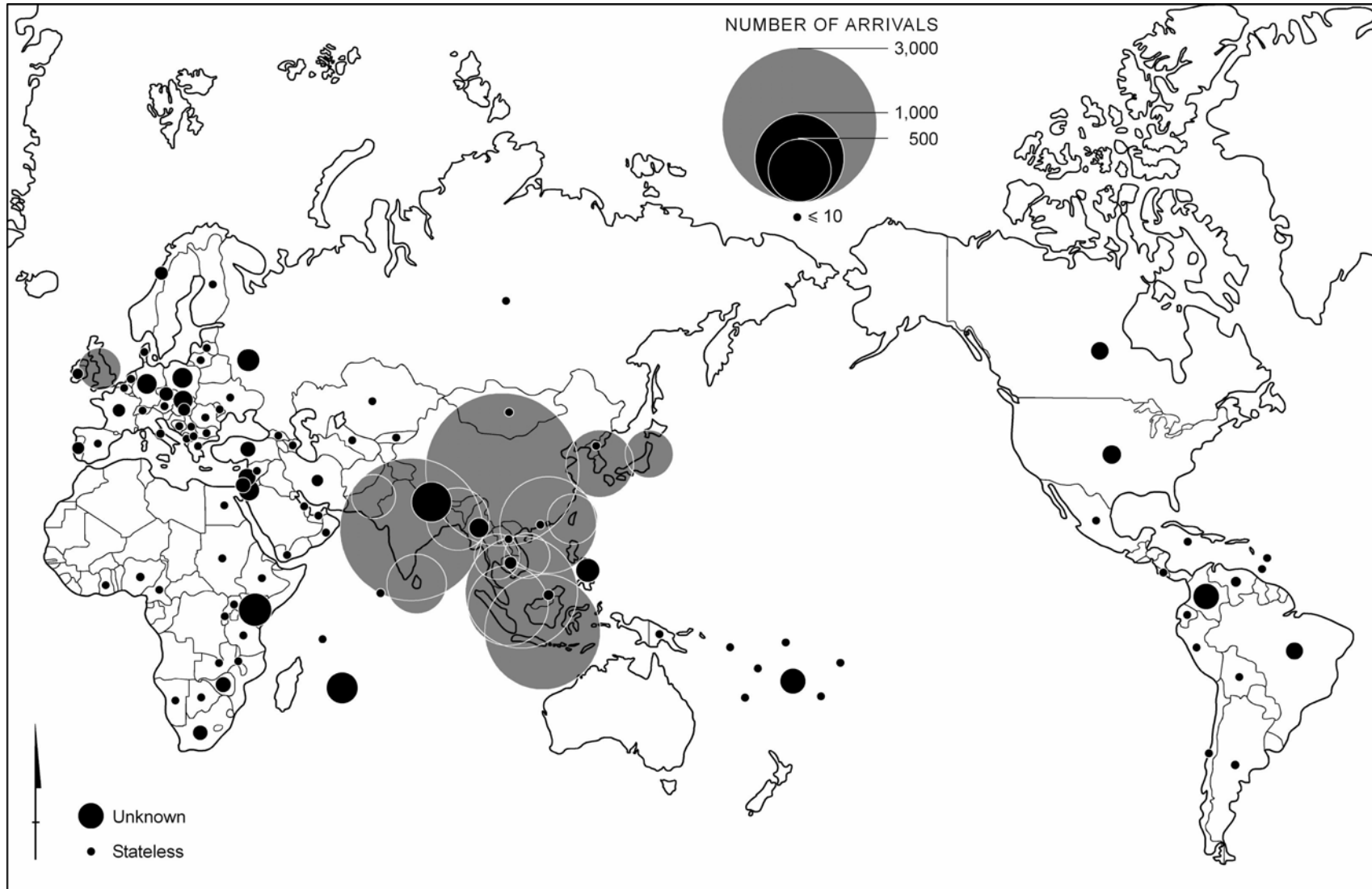
# Australia: Overseas Students Transferring to Permanent Residence by Country of Citizenship, 2005-06

Source: DIAC unpublished data



# Australia: Number of Skilled Stream Outcome Principles with Points for Australian Qualification by Citizenship, 2004-05

Source: Unpublished data supplied by DIAC



## **State Specific and Regional Migration Schemes**

- **Since 1995**
- **Divided Australia into High and Low Immigration Areas**
- **Low Growth Areas – Some Relaxation of Requirements**
- **Still Skill Focussed**
- **Temporary Residence Granted Initially**
- **Increased Involvement of State and Regional Government**
- **Student and 457 Initiatives**

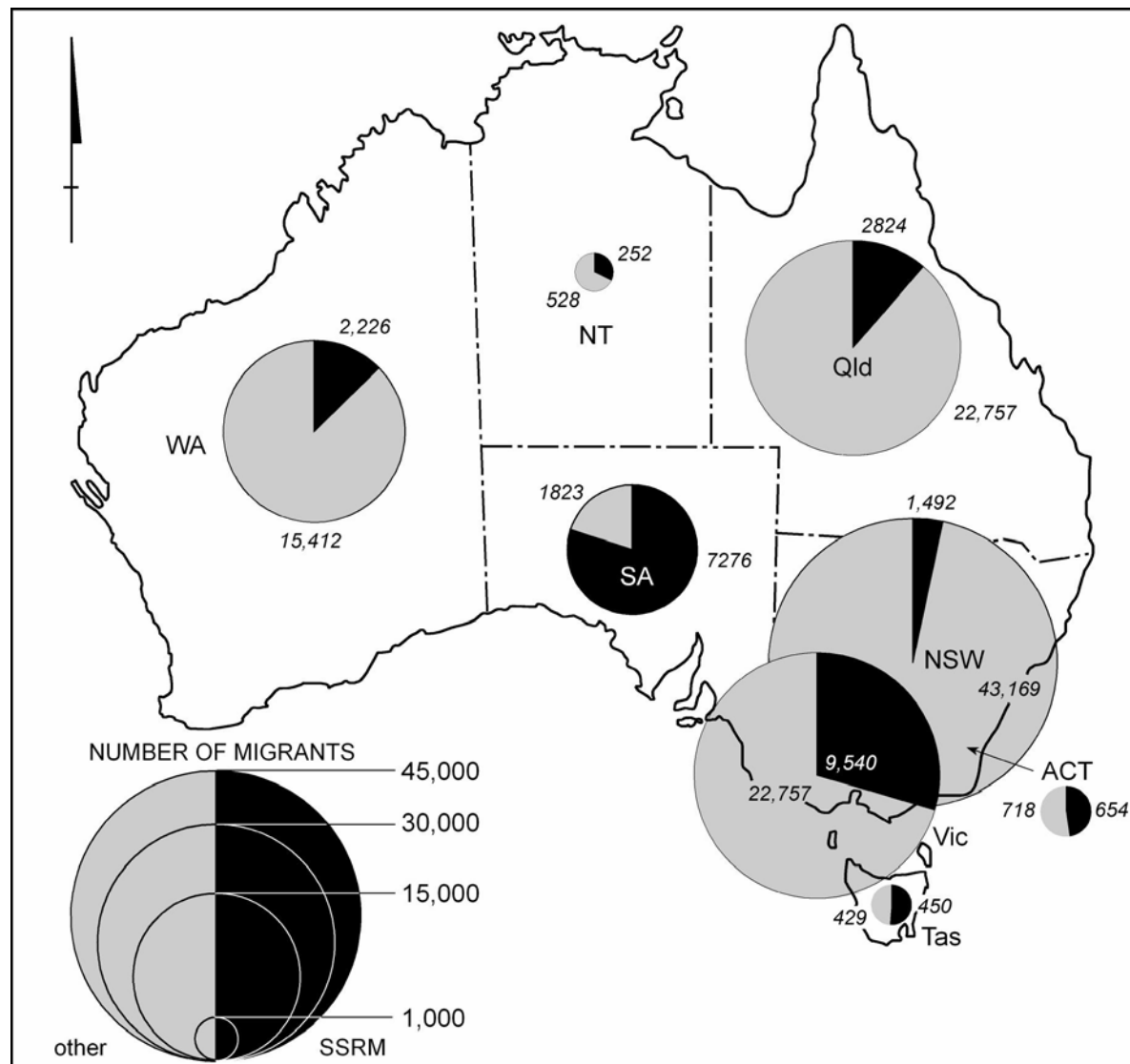
## Number of Immigrants with Visas Granted under the State Regional Specific Migration Mechanisms and Their Proportion of the Total Intake 1997-98 to 2005-06

Source: DIMA *Population Flows: Immigration Aspects*, various issues;  
DIMIA *Immigration Update*, various issues

Year	Number	Percent of Total Intake
1997-98	1,753	2.3
1998-99	2,804	3.3
1999-2000	3,309	3.6
2000-01	3,846	3.6
2001-02	4,136	4.6
2002-03	7,941	8.5
2003-04	12,725	11.4
2004-05	18,697	15.2
2005-06	27,488	19.2

## Australia: Settler Arrivals by State According to Whether they are State Specific and Regional Migration Scheme Migrants or Other Migrants, 2005-06

Source: DIAC unpublished data



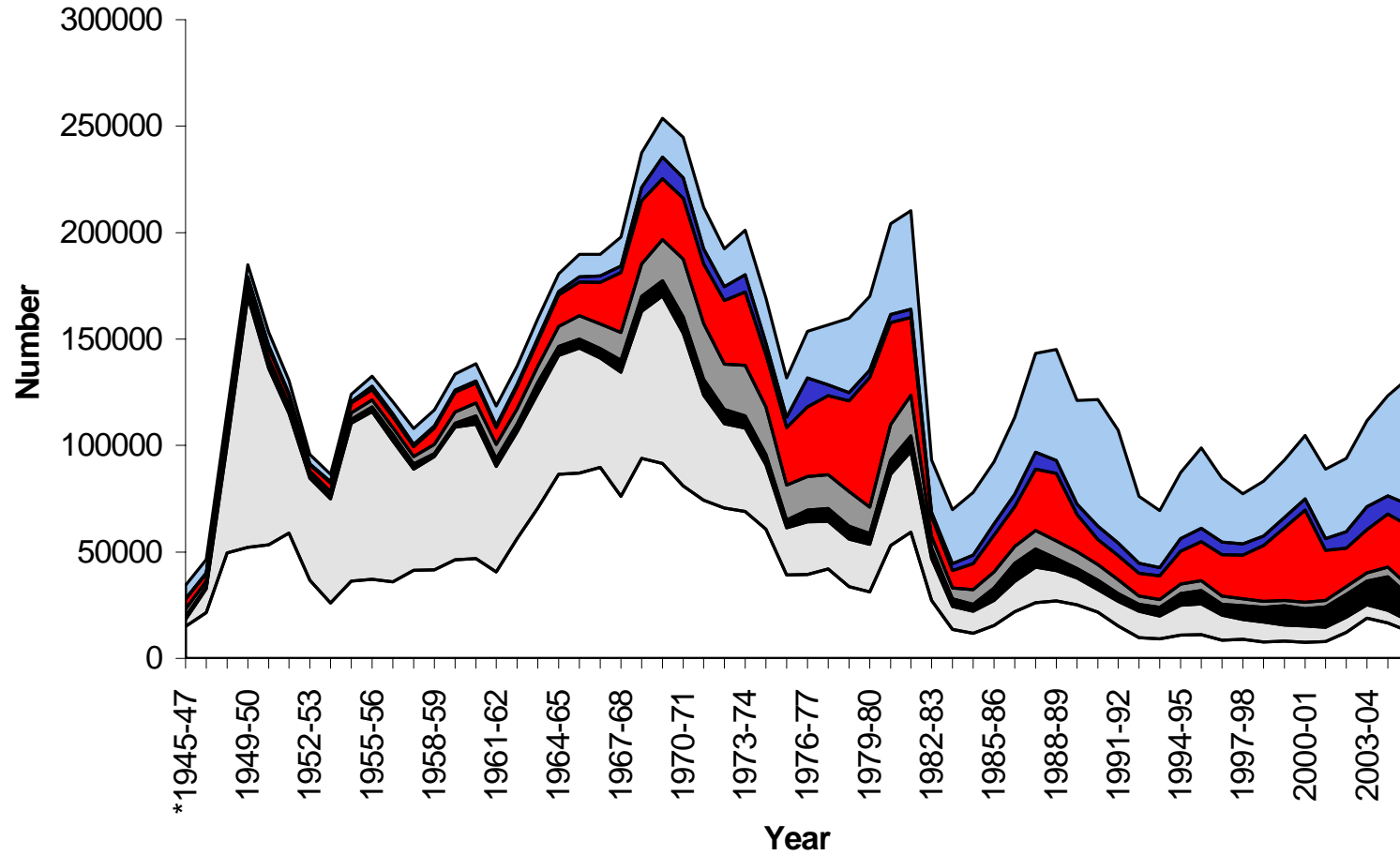
## Australia: State by Recent Arrivals (last 5 years), 1991-96, 1996-2001, 2001-06

Source: Australian Population Censuses of 1996, 2001, 2006

	Migrants Arriving			Percent		
	1991- 1996	1996- 2001	2001- 2006	1991- 1996	1996- 2001	2001- 2006
NSW	205136	236213	239876	41.2	40.8	34.1
Victoria	121461	136595	183437	24.4	23.6	26.1
Queensland	75238	100322	129959	15.1	17.3	18.5
South Australia	22525	23706	40219	4.5	4.1	5.7
Western Australia	57817	65282	87814	11.6	11.3	12.5
Tasmania	3861	3970	6431	0.8	0.7	0.9
Northern Territory	3646	4172	4571	0.7	0.7	0.7
ACT	8021	8484	10391	1.6	1.5	1.5
	497703	578742	702696	100.0	100.0	100.0

# Australia: Settler Arrivals by Region of Last Residence, 1947-2006

Source: DIMA, *Australian Immigration Consolidated Statistics and Immigration Update*, various issues



□ UK and Ireland □ Other Europe ■ Africa ■ Americas ■ NZ and Pacific ■ Middle East ■ Asia

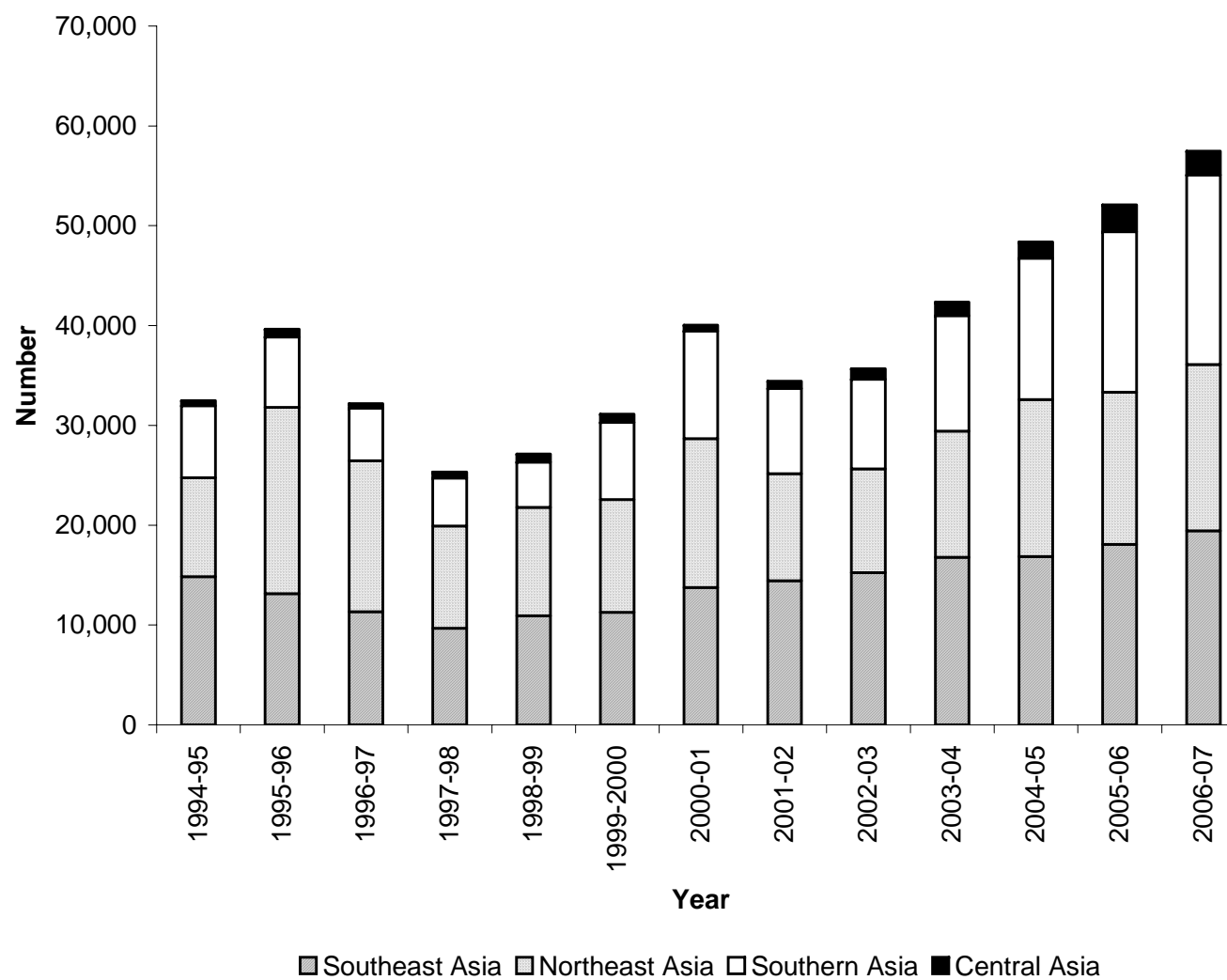
## Australia: Top 12 Birthplaces of Permanent Additions, 2005-06

Source: DIMA 2006

Birthplace	Number of Permanent Additions
United Kingdom	29,743
New Zealand	19,046
China	18,084
India	15,298
Philippines	5,611
South Africa	5,512
Malaysia	4,817
Korea	4,021
Sudan	3,798
Singapore	3,664
Sri Lanka	3,319
Indonesia	3,318

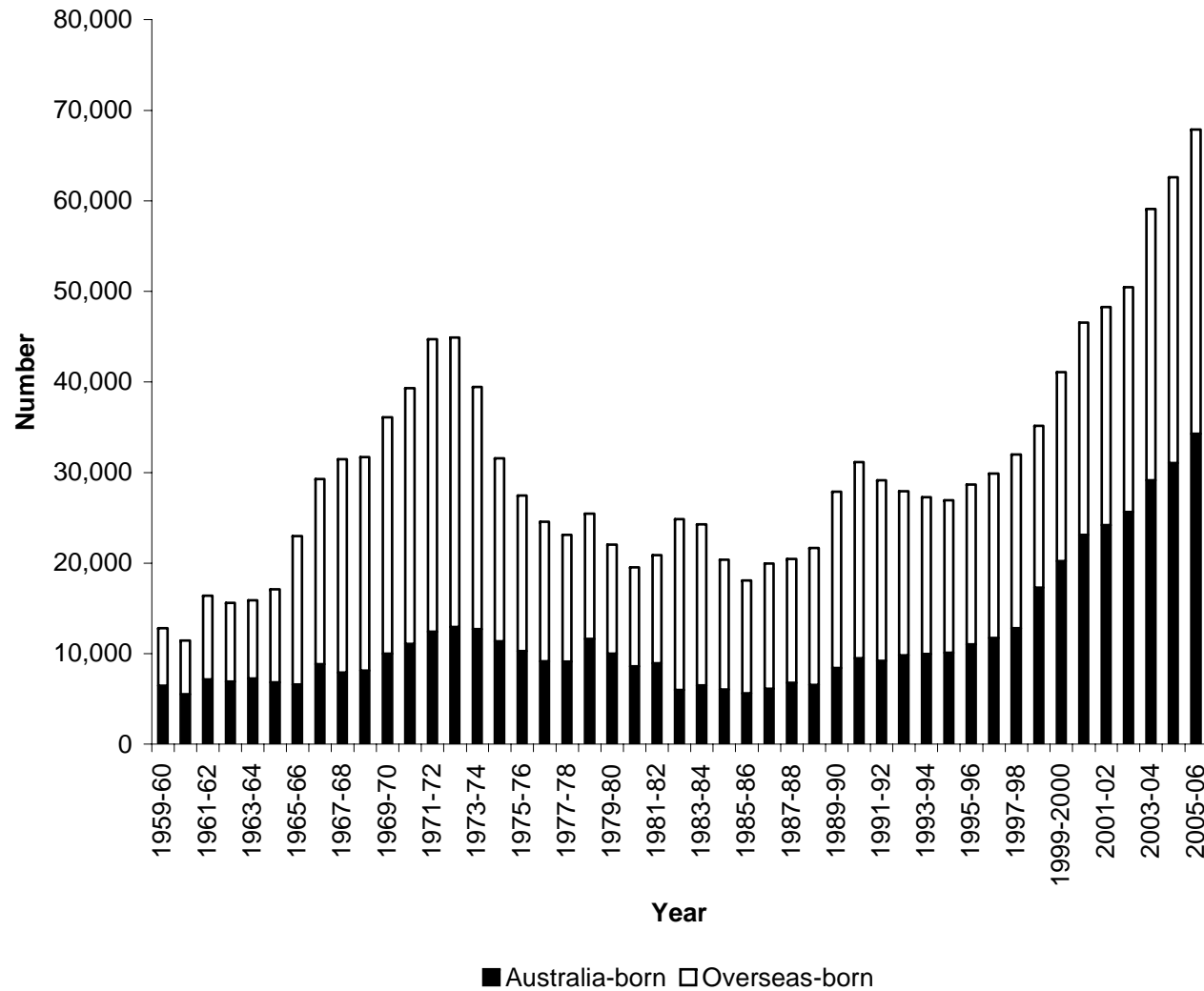
## Australia: Asia-Born Settler Arrivals by Region, 1994-95 to 2006-07

Source: DIAC, unpublished data and DIAC 2007b



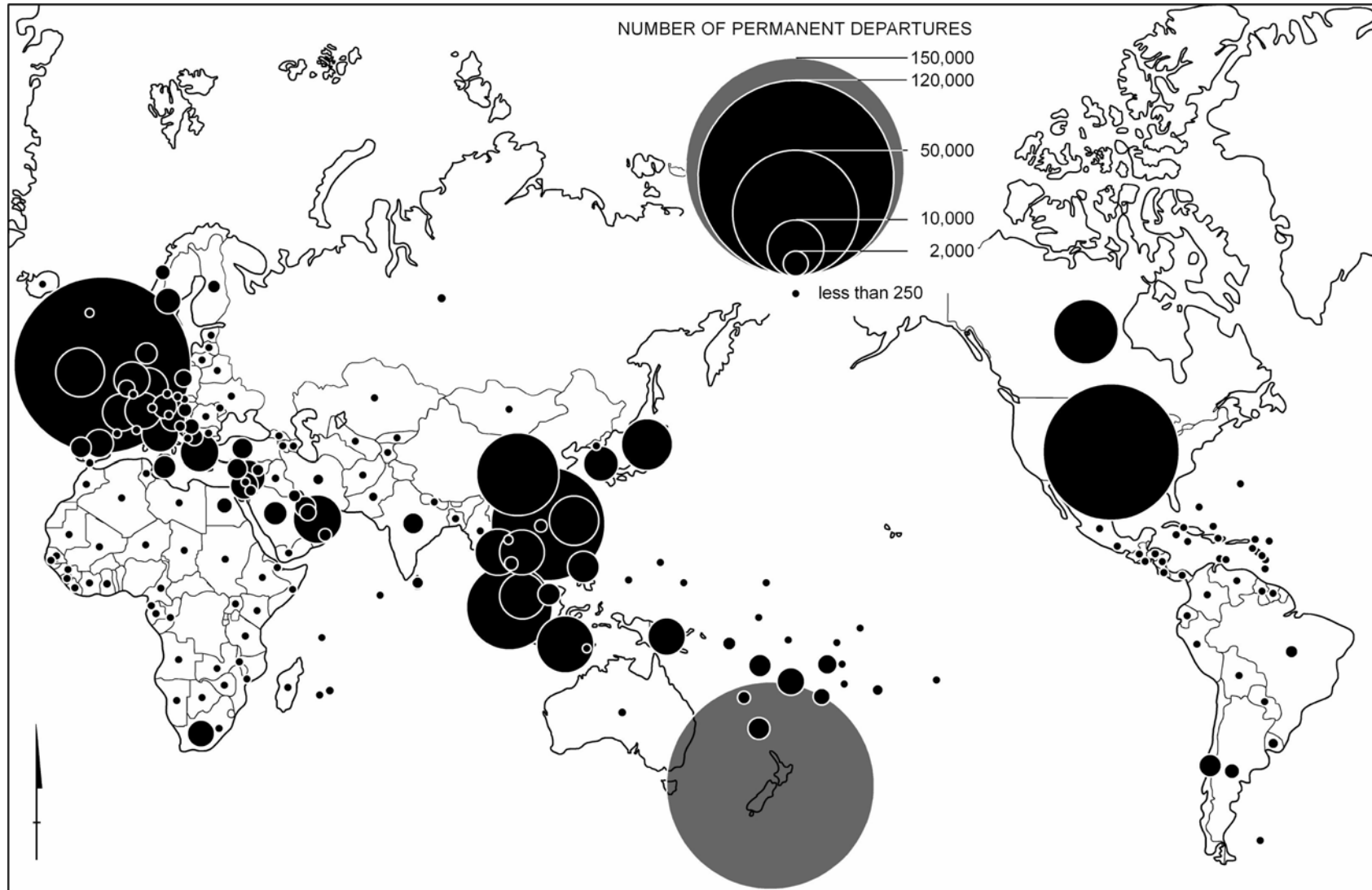
# Permanent Departures of Residents from Australia, 1959-60 to 2005-06

Source: DIMA, *Australian Immigration Consolidated Statistics and Immigration Update*, various issues



# Australia: Total Permanent Departures, 1993 to 2006

Source: DIMA *Immigration update*, various issues



# **Issue 1: Migration and Development**

- **New Interest**
- **Particular Focus on Pacific**
- **Lobbying by Harvesting Groups, Pacific, Governments, World Bank**
- **Climate Change Factor – Tuvalu**
- **Brain Drain**

## **Issue 2: Ageing/Tightening of Labour Market**

- **Training vs Immigration Debate**
- **Competing for Skilled Migrants**
- **The 457 Visa**
- **Students and Permanent Settlement**

## **Issue 3: Balance of Migration Categories**

- **Refugee Policy**
- **Family Migration**

# **Issue 4: Emigration/Diaspora**

- **Senate Inquiry**
- **Engaging the Diaspora**

## **Issue 5: Migration and the Regions**

- **Competition Between States**
- **Increasing Involvement at Subnational Level**
- **Increased non-Metropolitan Settlement**

# Conclusion

- **Dynamic Migration Situation**
- **Strong Government Bureaucracy, Cadre of Public Servants, Department of Immigration**
- **Strong Community Acceptance of Migration**
- **Willingness to Constantly Modify Regulations**